

The Safeguarding Team



The Safeguarding Team are here to protect students, staff and visitors to the College. If you are concerned that you have a safeguarding issue, you can contact the Safeguarding Team. You will find the logo for 'Push the Button' on your computer desktop. This is the preferred way for you to log your concerns.

In the case of an emergency, you can call 0151 353 4558 or drop into the POD next to the Balliol building reception to speak to the coordinator. There are eleven members of the safeguarding team, if the coordinator is unavailable, please contact one of the following:



Care Team Leader
Pam Cotter - ext 5883



Personal Development Coach
Liam Mathews - ext 5657



Retention and Progression Coordinator
Julia Fisher - ext 4498



Retention and Progression Coordinator
Linda Marsh - ext 4466



Health and Wellbeing Coordinator
Janine Hopewell - ext 4462



Personal Development Coach
Christina McCoy - ext 5618



Personal Development Coach
Julie Bass - ext 5633



Safeguarding Coordinator
Owen Rogers - ext 4558



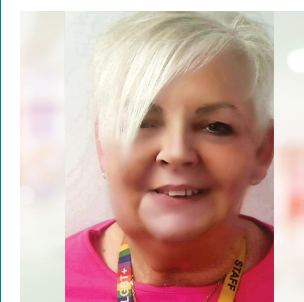
Safeguarding Officer
Michelle Ferguson - ext 4441



DSA/SEN Coordinator
Matt Wilson - ext 5920



Head of Learning Support
Jenny Quinn - ext 5850



Head of Student Services
Sue McKie - ext 6161